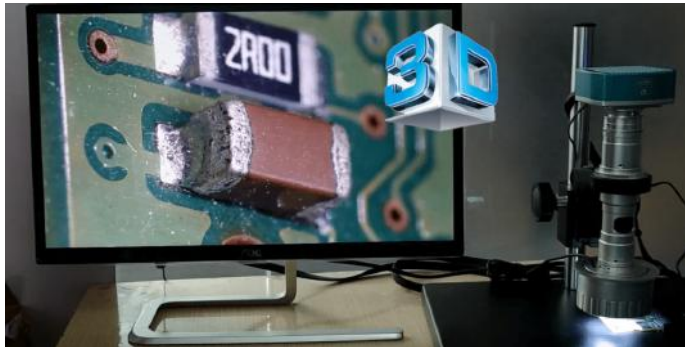


## Prozoom Digi 3D Digital Microscope

With Prozoom Digi 3D, you will have the opportunity to view 3D and full HD 1080p, and you will never miss a detail with up to 130x magnification.

All under one microscope. And every screen you want.



Magnification: 20-130X; (35-235X when using 21" monitor)

### Product Description:

- Image keeps clear in the whole zoom course, no flicker
- 0.7X~4.5X micro zoom body, Parallel Optical System, With Zoom Detents
- Zoom body size:  $\varnothing 39\text{mm}$
- 0.5X CCD coupler
- 1X objective lens
- Base size: 260\*380 mm

### HD 1080P HDMI/VGA Measuring Industrial Camera:



### Specification:

- Sensor type: 2 million pixels, 1 / 2.5 "CMOS color
- Effective pixels: 1920 \* 1080
- Number of data bits: 10bit
- Pixel size:  $3.0\ \mu\text{m} * 3.0\ \mu\text{m}$
- Frame rate: 30 frames / sec
- Sharpness: The maximum definition above 900TV lines

- Scan mode: progressive
- Shutter Type: Electronic Shutter
- Dynamic range > 90dB
- Signal to noise ratio: 55dB
- Sensitivity: 2.0 V / lux-sec (550 nm)
- Exposure method: manual / automatic
- White Balance: Auto / Manual
- Lens Interface: C / CS
- Video interface: standard HDMI interface, VGA interface
- HDMI output resolution: 1920X1080 60Hz (HDMI default)
- Strong Measuring Functions

### LED Ring Light:



### 56pcs Led Bulb

- Connector size:** 59mm; 360degree rotated ring connector
- Brightness:** More than 12,000Lux
- Adjustment Range:** Zoom from 0-100%
- Working distance:** 50-250mm
- Power:** 3.5W
- Input:** 90V-240V
- Output:** 12V/0.5A

### 13.3 inch HD LCD Monitor



- Size:** 13.3"
- Panel Type:** IPS panel

<b>Backlight:</b>	LED
<b>Backlight Life:</b>	30,000 hrs
<b>Resolution:</b>	1920*1080
<b>Aspect Ratio:</b>	16:9
<b>Contrast:</b>	1000:1
<b>Brightness:</b>	350 nits
<b>Viewing Angle (H/V):</b>	178/178
<b>Response Time:</b>	6 ms
<b>Display Color:</b>	16.2M
<b>Operating Temperature:</b>	0~50
<b>Storage Temperature:</b>	-20~60
<b>Video Inputs/Outputs:</b>	HDMI /VGA+HDMI
<b>Audio Inputs/Outputs:</b>	N/A
<b>Touch:</b>	NO
<b>Material:</b>	Aluminum alloy case
<b>Installation:</b>	VESA mount
<b>Power Requirement:</b>	DC 12V
<b>Control:</b>	Remote control
<b>Product Size:</b>	32.0*20.1*1.6 CM
<b>Net Weight:</b>	0.68 KGS
<b>Certificates:</b>	CE/FCC/ROHS/CCC



Accessories: VESA wall mount kit, HDMI cable, power adapter and manual.

**35° View Angle Attachment with a 0.5X Objective Lens, for 3D viewing.**

## Technical Parameter

Objective	Items	CCD Coupler					
		0.35X	0.5X	0.75X	1X	1.5X	2X
0.5X	Magnification	0.1225~0.7875	0.175~1.125	0.2625~1.688	0.35~2.25	0.525~3.375	0.5~4.5
	FOV(mm)	46~7	35~5	23.5~4	17.6~3	11.8~2	8.8-1~3
	WD(mm)	198					
0.75X	Magnification	0.18375~1.18125	0.2625~1.6875	0.39375~2.53125	0.525~3.375	0.7875~5.0625	1.05~6.75
	FOV(mm)	31-4.7	23.5-3.6	15.7-2.4	12-1.8	7.8-1.2	6-0.9
	WD(mm)	131					
1X	Magnification	0.245~1.575	0.35~2.25	0.525~3.375	0.7~4.5	1.05~6.75	1.4~9
	FOV(mm)	23-3	17.6-2.7	12-1.8	9-16	6-0.98	4-0.7
	WD(mm)	96					
1.5X	Magnification	0.3675~2.3625	0.525~3.375	0.7875~5.0625	1.05~6.75	1.575~10.125	2.1~13.5
	FOV(mm)	15-2.3	11.8-1.8	7.8-1.2	6-0.99	4-0.61	3-0.4
	WD(mm)	63					
2X	Magnification	0.49~3.15	0.7~4.5	1.05~6.75	1.4~9	2.1~13.5	2.8~18
	FOV(mm)	11.6-1.7	8.8-1.3	6-0.9	4-0.71	3-0.41	2-0.3
	WD(mm)	46					



**Adres:** Yeşilbağlar Mah., Selvili Sk., No:2, A313,  
34893, Pendik, İstanbul

**Telefon:** +90 216 652 2300

**E-posta:** info@prosmt.com